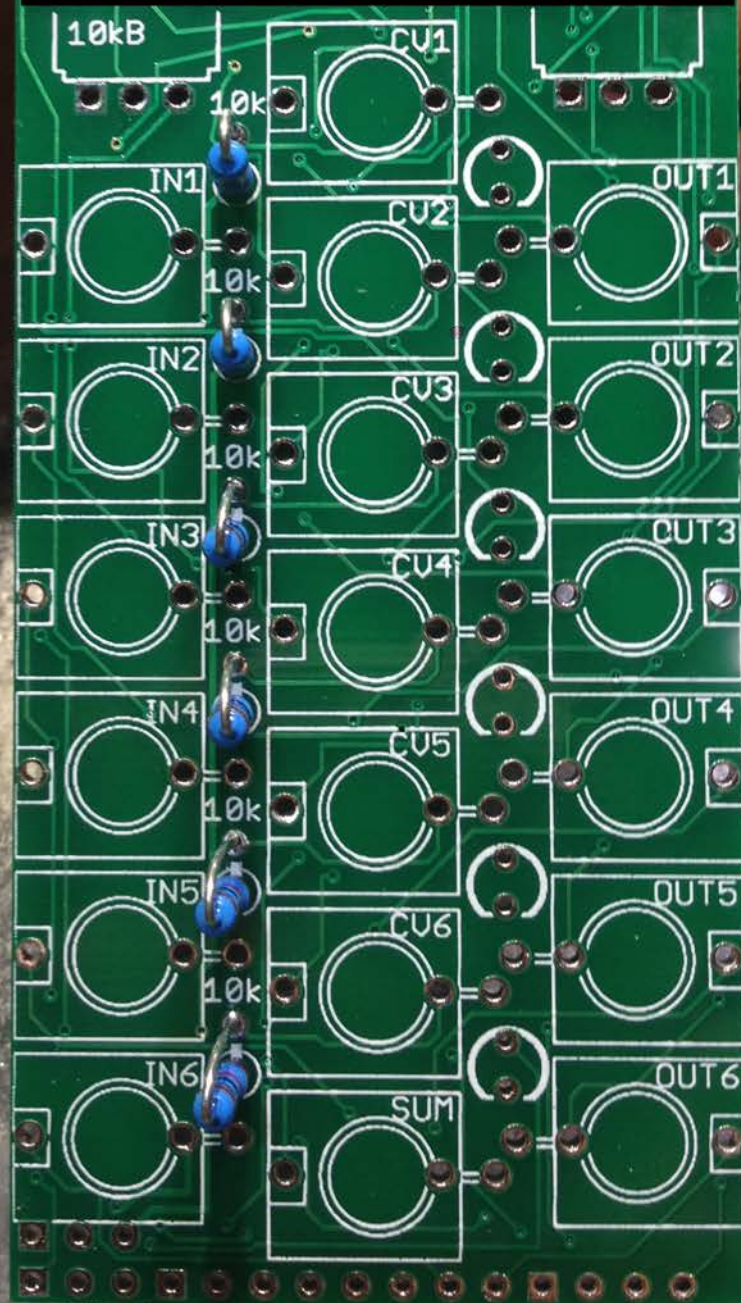
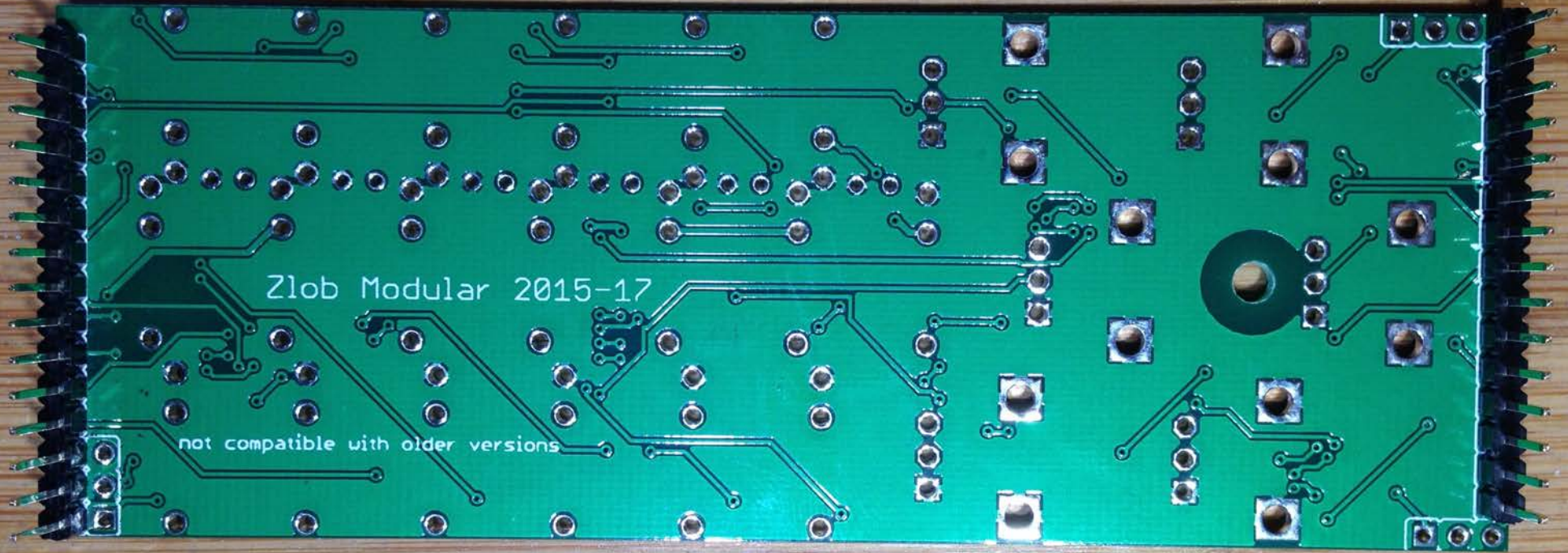


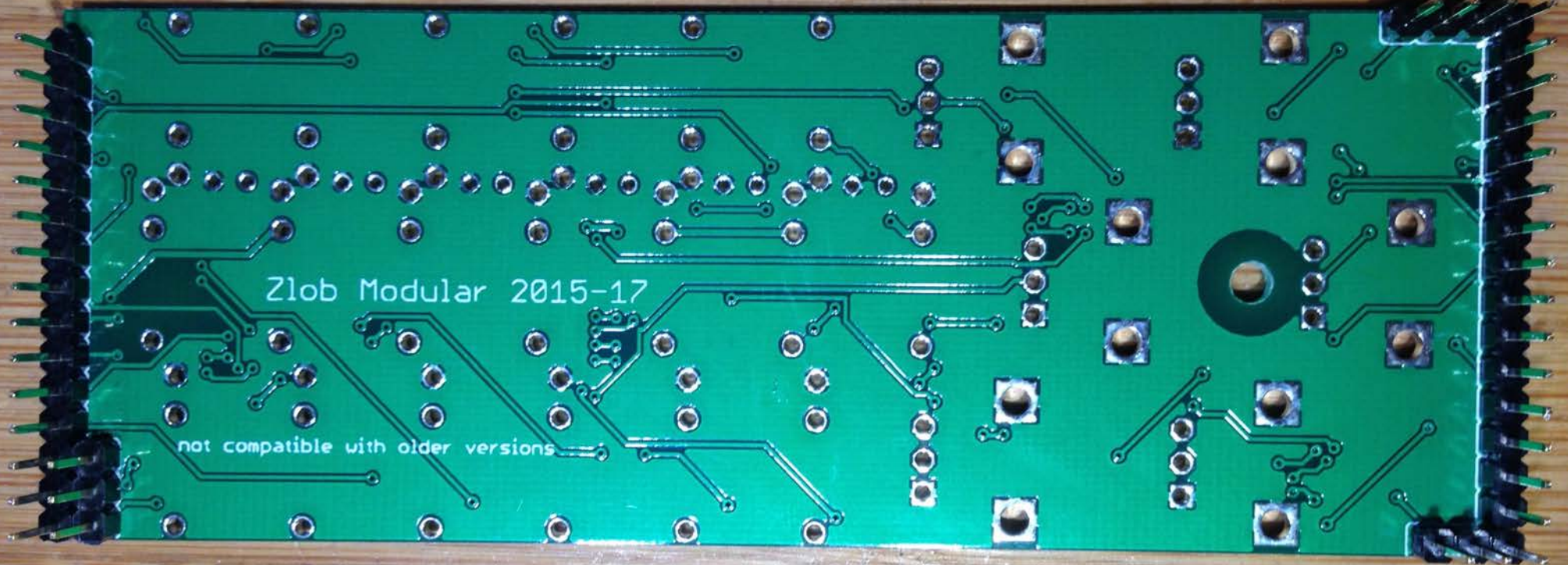
solder the six 10k resistors first. do not leave them out. the circuit will not operate properly without them. the rest of pictures do not show the 10k resistors, but everything else is the same.



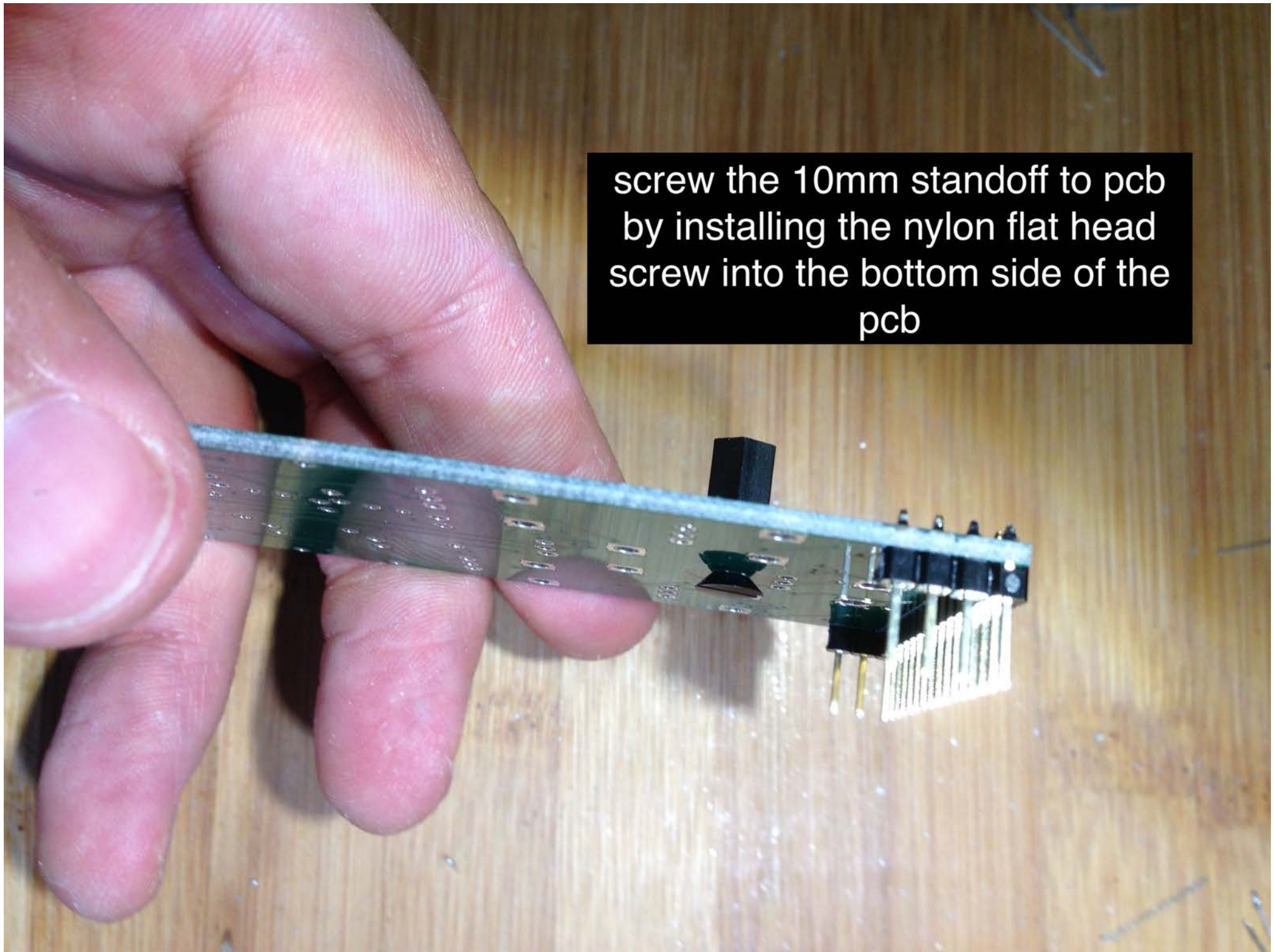
solder the two 15 pin male headers first



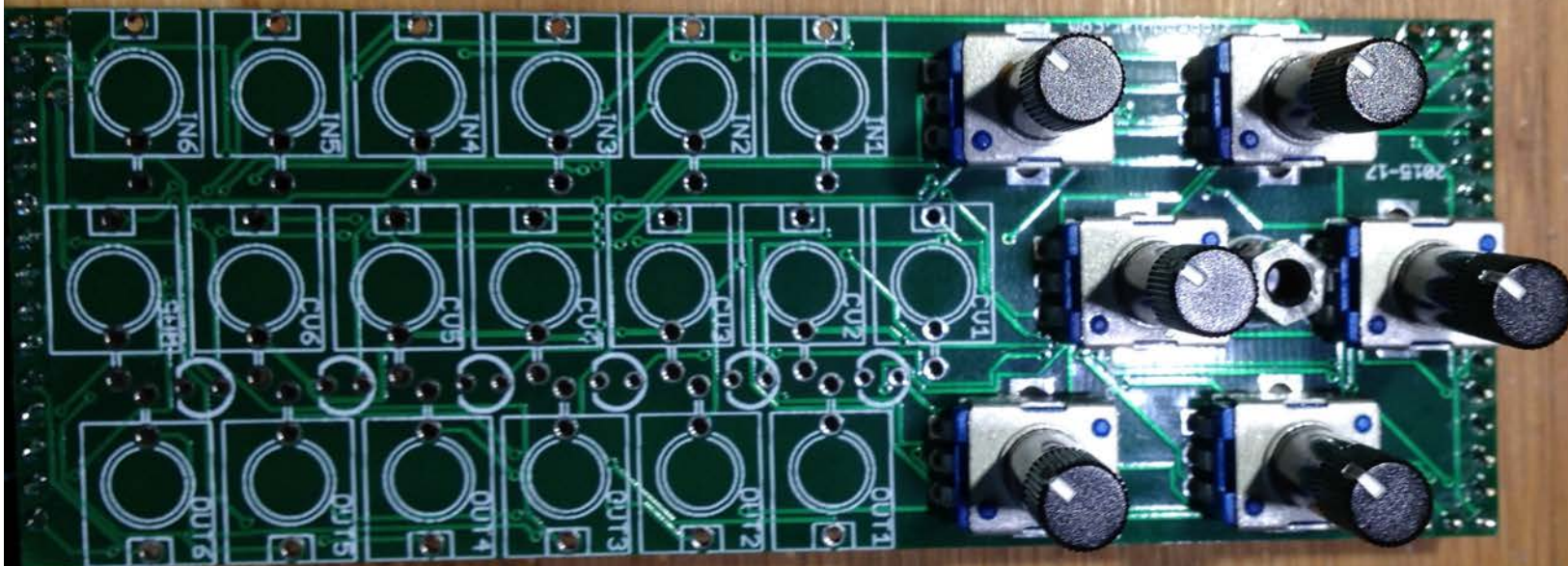
solder three 3 pin male headers



screw the 10mm standoff to pcb
by installing the nylon flat head
screw into the bottom side of the
pcb



carefully install the pots by slightly bending the chassis legs inwards and lightly pressing until the pot pops into the pcb footprint. dont solder them yet





put leds into
respective
footprint. make
sure polarity is
correct according
to silkscreen.
short leg facing
down.

dont solder yet

insert jacks into pcb.
dont solder yet



carefully fit the panel onto the components/pcb

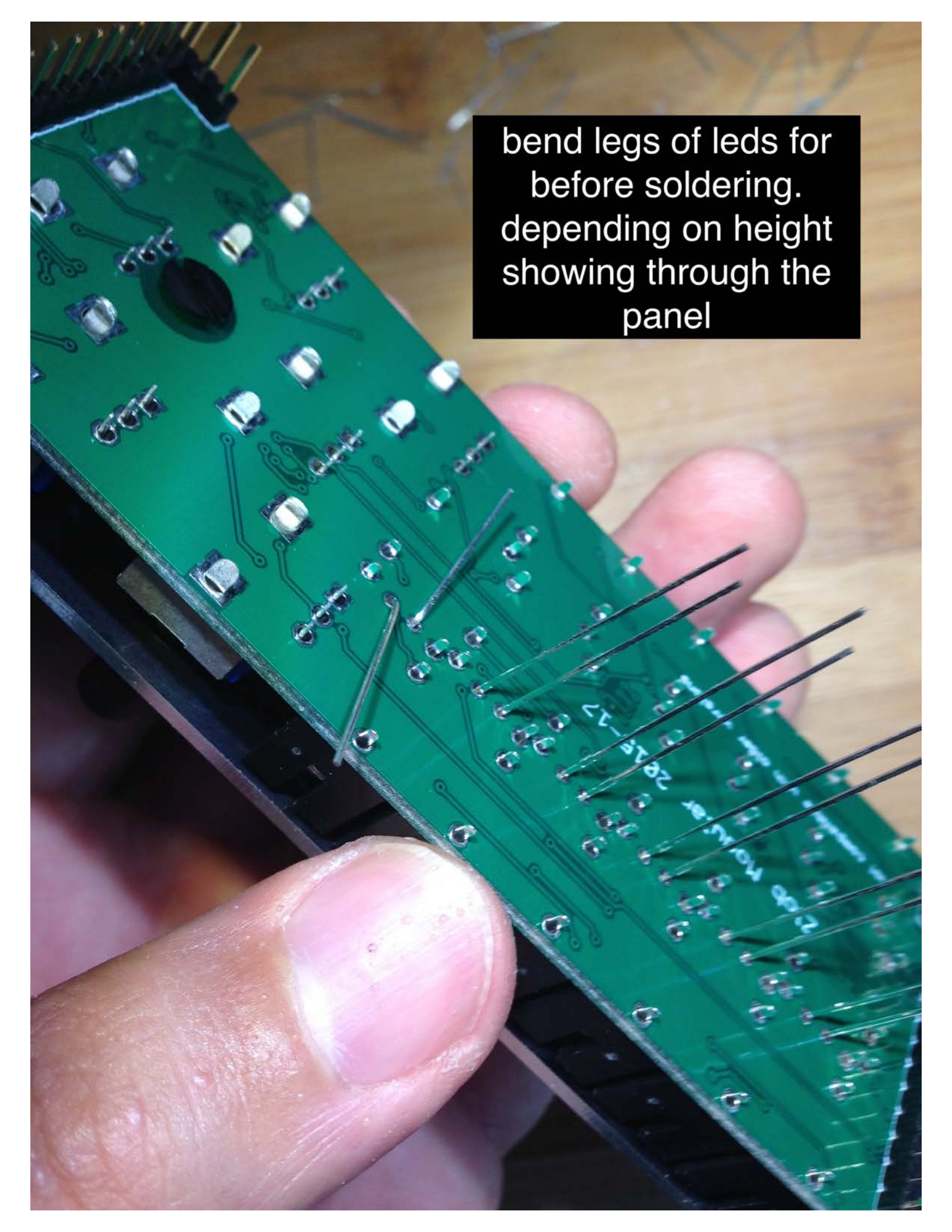


screw the metal phillips screw into the standoff to hold the pcb to the panel. not too tight



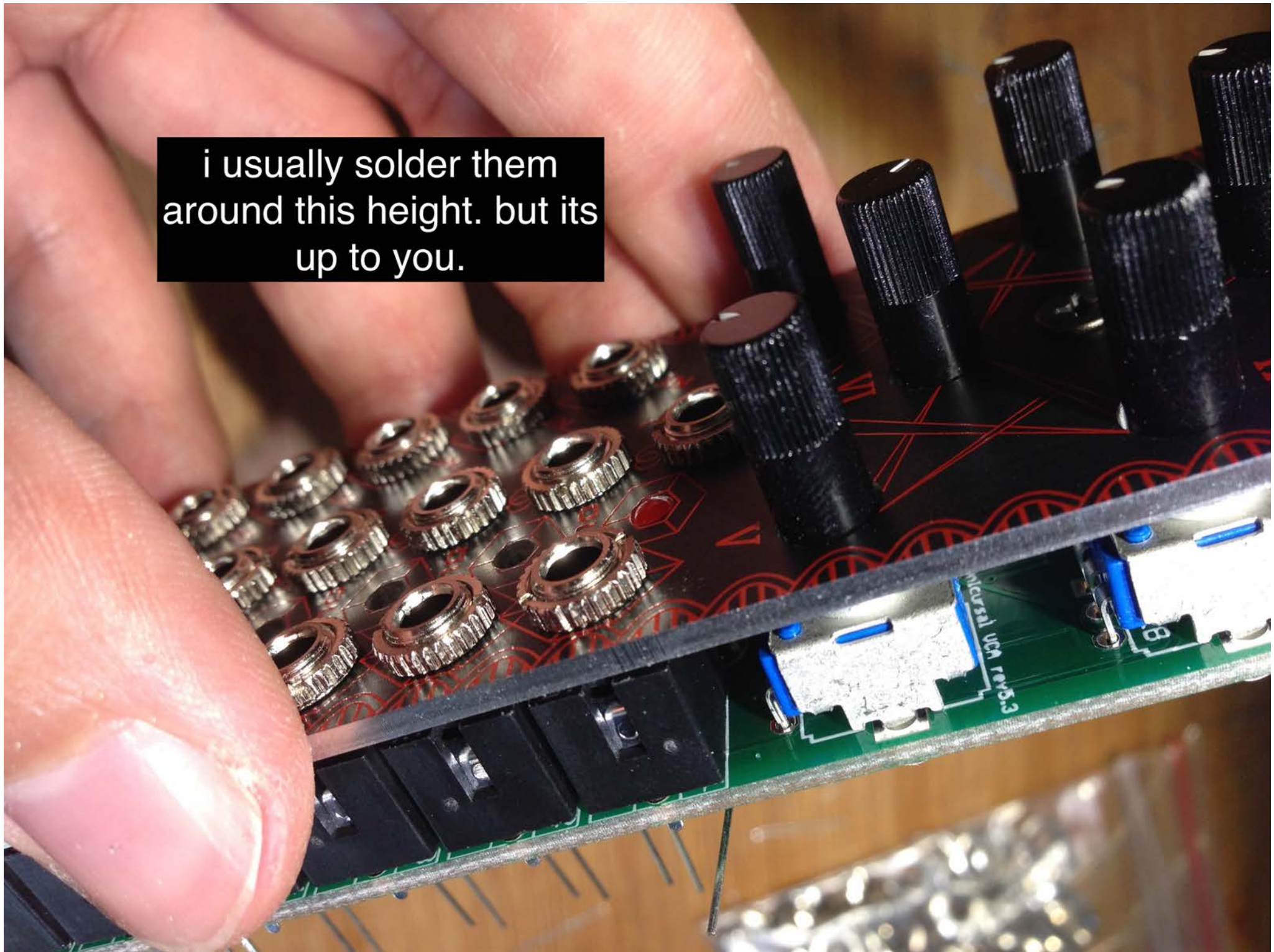
now screw
nuts onto
jacks. not too
tight. make
sure all
components
are still
inserted into
pcb and are
flush before
soldering



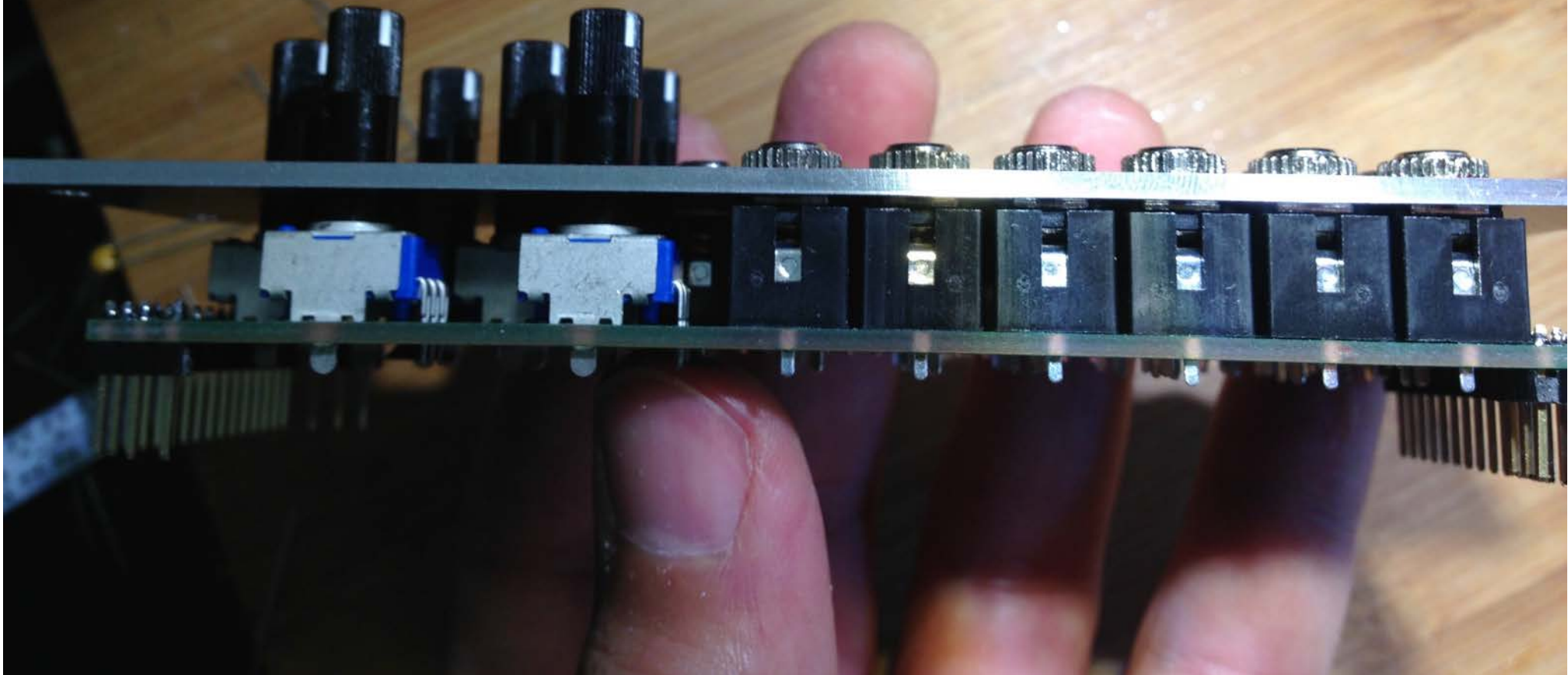


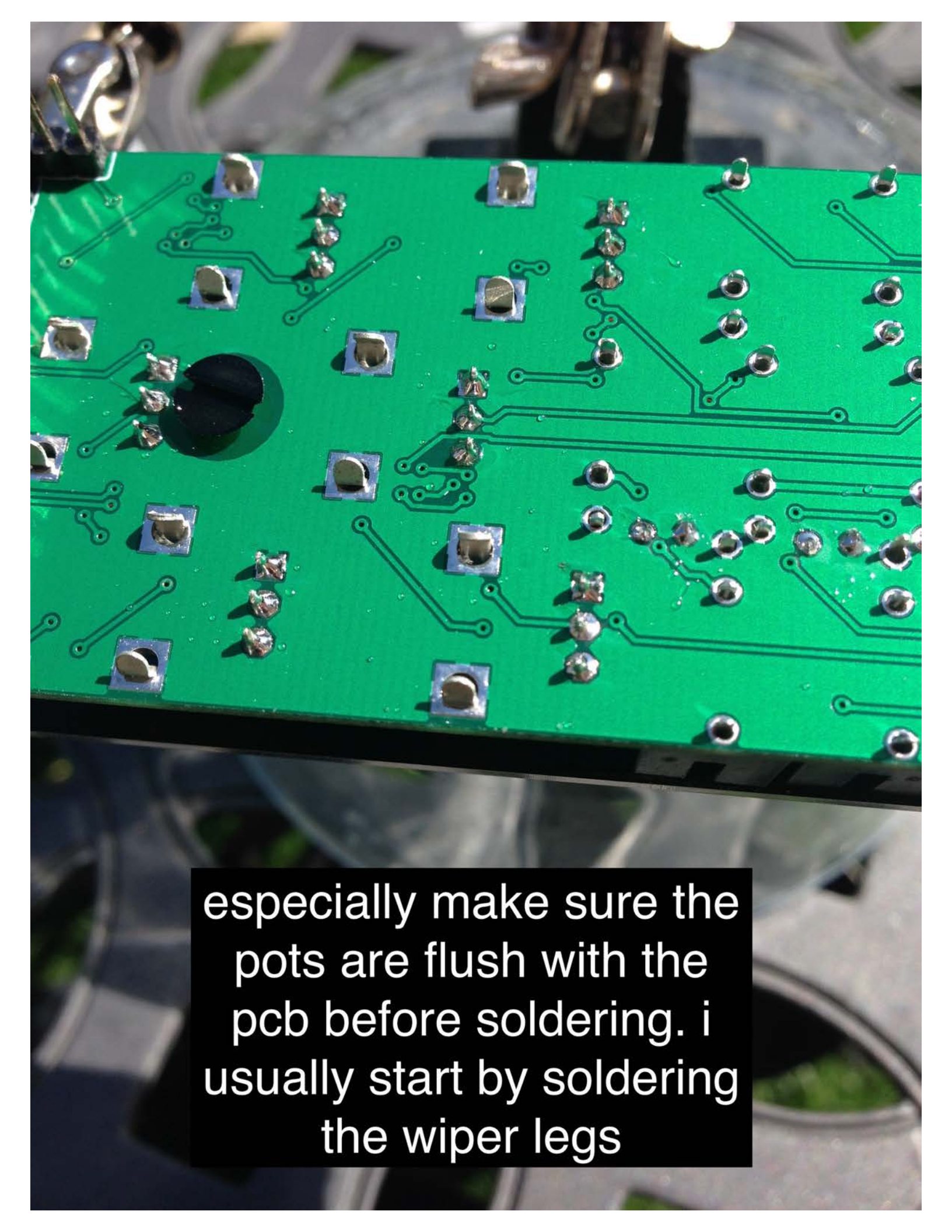
bend legs of leds for
before soldering.
depending on height
showing through the
panel

i usually solder them
around this height. but its
up to you.



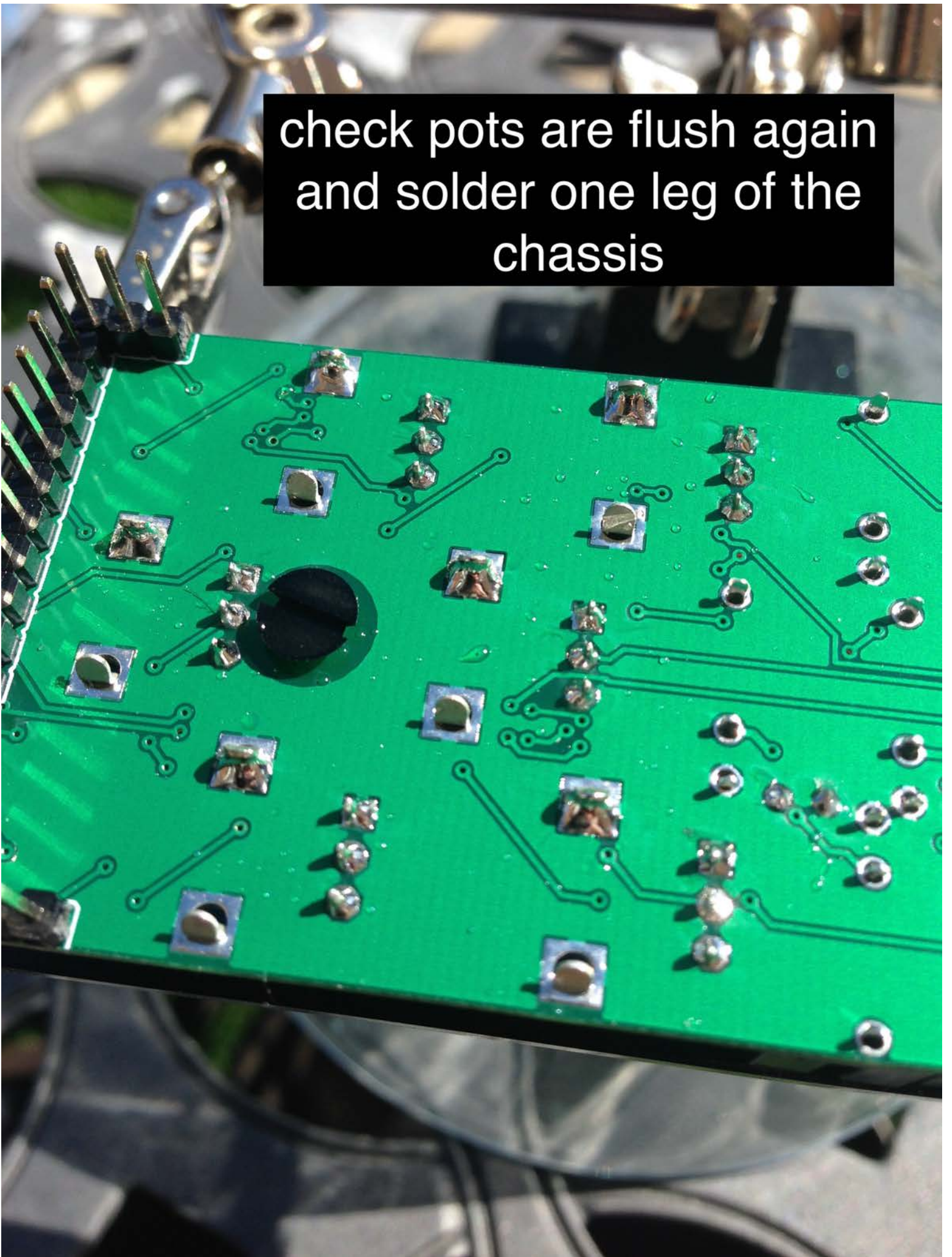
once again make sure all component legs
are inserted into the pcb and are flush



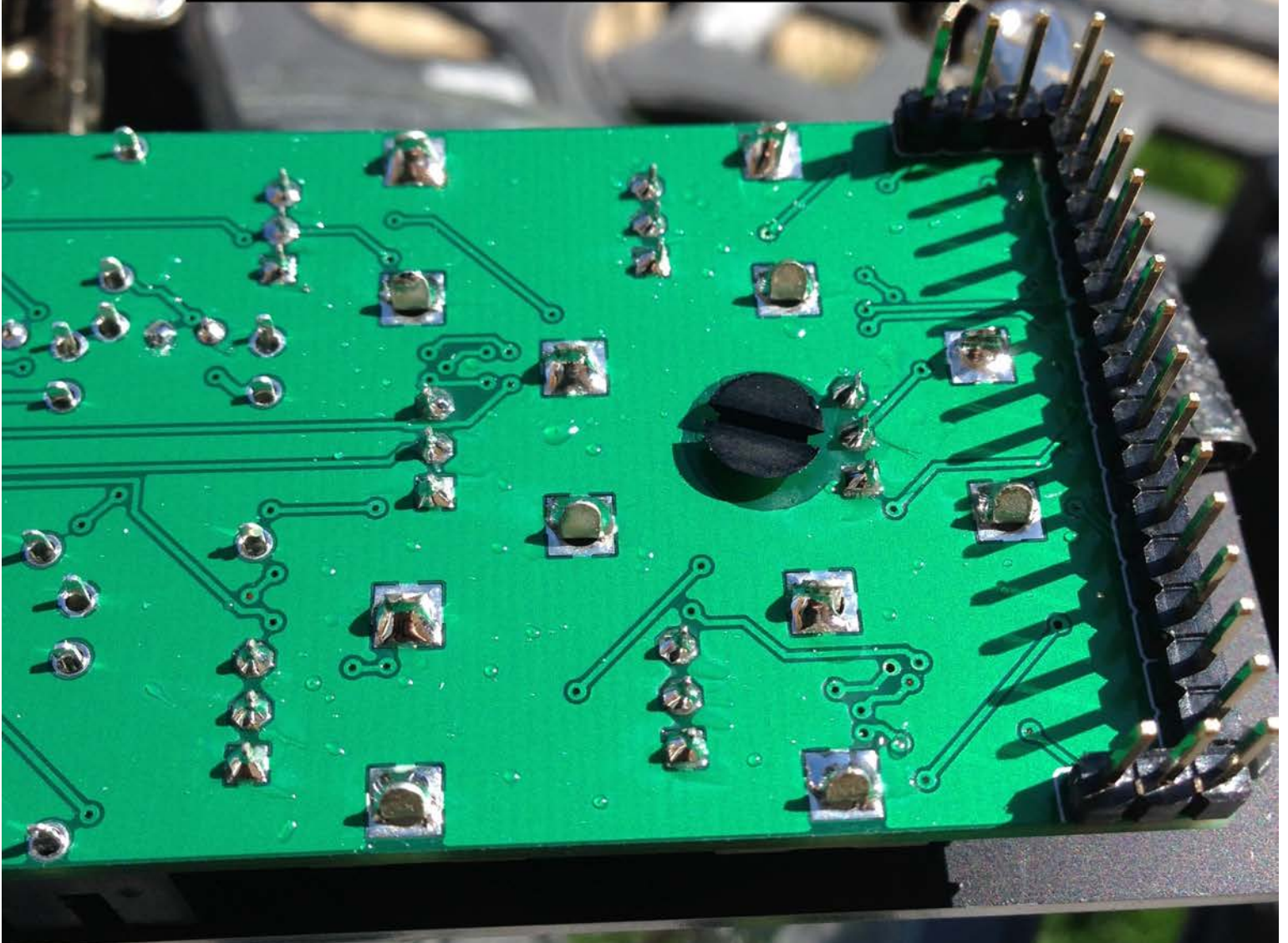


especially make sure the
pots are flush with the
pcb before soldering. i
usually start by soldering
the wiper legs

check pots are flush again
and solder one leg of the
chassis



solder other side of pot
chassis



make sure jacks are flush with
pcb. i usually start with the switch
pin of every jack

Zlob Modular 2015-17

not compatible with older versions



then solder the rest of the jack legs

Zlob Modular 2015-17

not compatible with older versions

tighten jack
nuts and
standoff
screw. dont
over tighten

